



When talking about trends and tendencies in the design world, we don't just mean fashionable colors or materials. We're also asking a broader question, making an in-depth observation of human behavior: What does a person need and what do they want? What is occupying humanity in these times and in what direction is it developing?

The answers to these questions are translated into a mindset that leads the worlds of design, color, and material.

A number of topics that occupy our minds today are a sense of belonging, responsibility for the environment, and working time vs. leisure time—balancing life obligations with a healthy lifestyle.

The main trend emerging as we enter 2023, after a long period of uncertainty and instability, is that people are seeking security, stability, a relaxed routine, and peace of mind.

That may be why a new style known as Japandi is becoming more and more popular. It combines two philosophies and styles: Japanese and Scandinavian. Both of these styles devote attention to simplicity and are loyal to materials in their raw form, out of respect for nature and our living environment.

With this in mind, we wanted to create a collection that showcases the beauty of nature. Verity features simple patterns with an earthy feeling and calming tones.

We want to emphasize the senses of intimacy, stability, love, balance, and simplicity. We want people who use our rugs in their homes to feel safe again—relaxed and balanced.

As usual, you will find that we've put our soul into each choice we've made, including the style, shape, texture, and color. You will discover that we've chosen to create something we believe in to contribute to better moments at home. For you!

*With love,
The ADAMÁ Team*

Cuando hablamos de modas y tendencias en el mundo del diseño, no solo nos referimos a colores o materiales. También observamos el comportamiento humano y nos preguntamos: ¿Qué necesita una persona y qué quiere? ¿Qué preocupa a la humanidad en estos tiempos y en qué dirección se está desarrollando?

Las respuestas a estas preguntas se traducen en una solución que lidera el mundo del diseño, color y material.

Los temas que ocupan nuestra mente hoy en día son un sentido de pertenencia, responsabilidad por el medioambiente, y compaginar el trabajo con el tiempo libre, manteniendo un equilibrio entre las obligaciones y un estilo de vida saludable.

La principal tendencia emergente al entrar al 2023, después de un periodo incierto e inestable, es la búsqueda de la seguridad, estabilidad, una rutina relajada, y paz mental.

Esa puede ser la razón por la cual un nuevo estilo conocido como Japandi se está volviendo cada vez más popular. Combina dos filosofías y estilos: japonés y escandinavo. Ambos estilos prestan atención a la simplicidad y son fieles a los materiales en su forma cruda, por respeto a la naturaleza y nuestro entorno de vida.

Con esto en mente, queríamos crear una colección que mostrará la belleza de la naturaleza. Presentar patrones simples con una sensación terrenal y tonos relajantes.

Queremos enfatizar los sentidos de intimidad, estabilidad, amor, equilibrio y sencillez. Queremos que las personas que usan nuestras alfombras en sus hogares se sientan seguras de nuevo, relajadas y equilibradas.

Como de costumbre, encontrarás que hemos puesto nuestra alma en cada elección que hemos hecho, incluido el estilo, la forma, la textura y el color. Descubrirás que hemos elegido diseñar algo en lo que creemos para contribuir a mejores momentos en el hogar. ¡Para ti!

*Con amor,
El equipo Adamá*

Ocell_V 80x120 cm



ADAMÁ product line







Cusco_G 10x10 cm, 15x15 cm

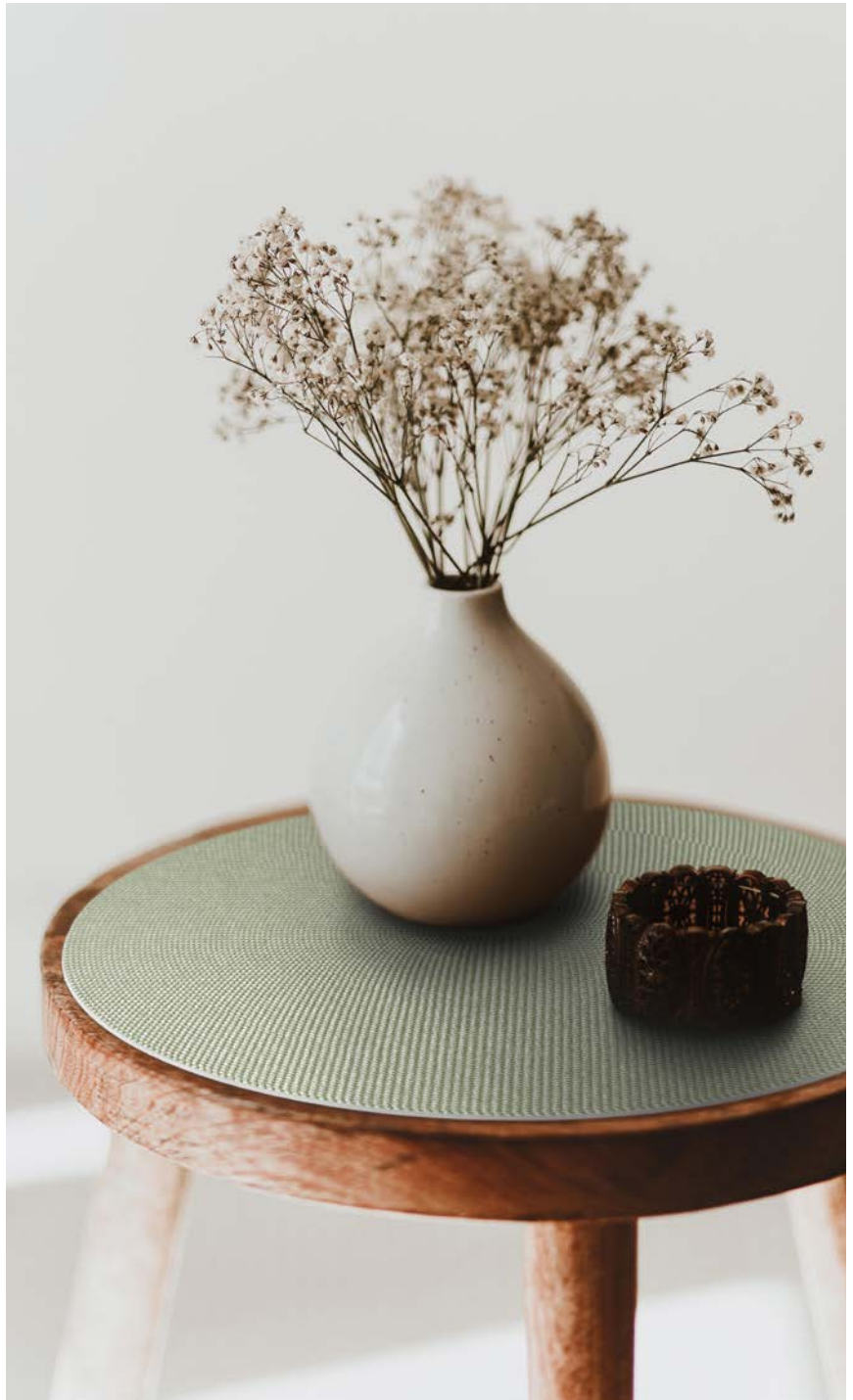


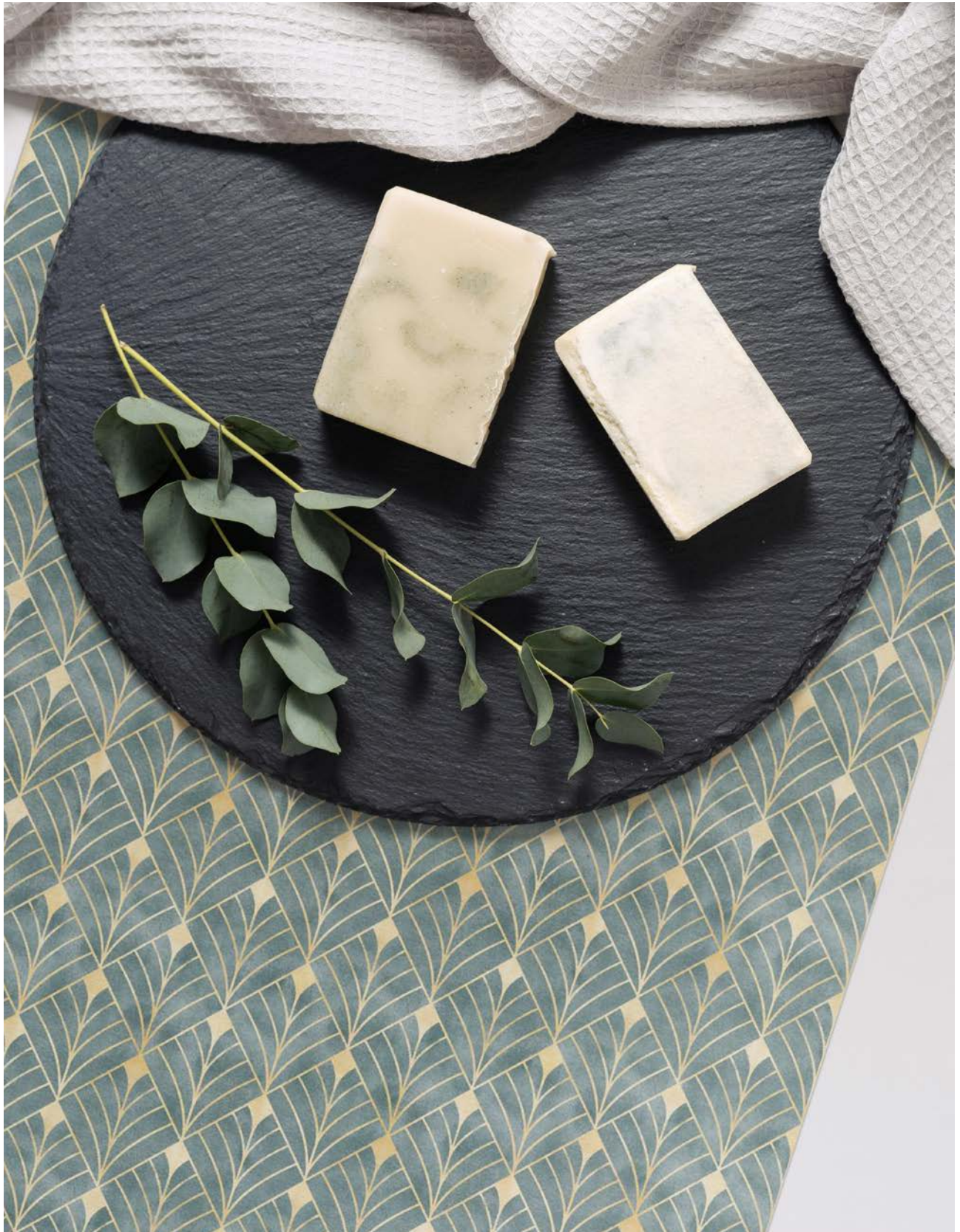
Roma_P 35x50 cm



Caracol - G - Ø 120 cm









Piedra_G 60x120 cm, 60x240 cm





Manos_C 200x300 cm







Gracia_V 80x200 cm





ADAMÁ and Adjectives

The Adjectives Mission

Our mission is to inspire you to create a home that you love by defining a style that is unique to you.

In the heart of Central Florida, a destination for visitors from all over the world, lies a creative décor stop that no one will want to miss. Adjectives was founded 10 years ago with one location and has since become a home décor icon in the region. With the recent opening of a fifth spectacular store in the heart of Orlando, Adjectives has cemented its place as the area's premier destination for unique and inspiring décor and furnishings.

At this market, an absolute feast for the senses, you'll find it all: new and vintage furniture, local art pieces, eye-catching accessories, and everyday home staples like candles. Adjectives' goal is to empower and inspire customers to break out of the everyday mold and make an individual design statement that reflects their loves and personality. Customers range from the high-end designer to the eclectic one-of-a-kind shopper. Adjectives is a gold mine for anyone who enjoys choosing from new, old, and repurposed items to create a look that's all their own.

Over the years, the design team at Adjectives has discovered products that are a uniquely compelling match for the Adjectives mission. One of the lines available in every Adjectives store is ADAMA's vinyl rugs. ADAMA mats come in many shapes and sizes, but are far more durable and easier to clean than a typical rug. The team took one look at ADAMA's rugs, with their potential for individual inspiration, and knew they wanted to incorporate them into

"Inspiring a home and style that you love."





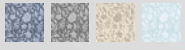
the store's design vision. To show the rugs' benefits to customers, they made them a part of design collections throughout the store. ADAMA rugs fit in perfectly, adding a beautiful design base to each setting, and hold up well under all the foot traffic, highlighting their durability. In addition, they add the ideal finishing touch to the store's cozy and artistic interior designs, whether they lean vintage or modern.

The store offers ADAMA's rugs, table toppers, and table runners, which are a hot seller. Customers are consistently delighted by the design and customization options available with ADAMA's products. Jenn, who works at Adjectives, loves helping customers choose the ADAMA products that will work best in their homes, including their ideal pattern and custom size. Customers often choose the Old World, striped, and tile designs to enliven their kitchens, dining tables, and living rooms. For those who have small children or pets, ADAMA products are a brilliant way to meld personalized design with durability and easy cleaning.

Families are delighted to find ADAMA's smart solution that doesn't compromise on quality. Many customers enjoy the look of tile but despise scrubbing grout. And who doesn't love creating a well-appointed dining table without having to constantly launder a runner and placemats? Jenn adores that with ADAMA her customers can have the elegance with no sacrifice, and says that in the end, for her customers the very best aspect of ADAMA's products is the huge selection of beautiful designs that can fit any design motif.

She hopes to add ADAMA's placemats and coasters to the store's offerings soon. For years into the future, Adjectives will be here for Central Florida shoppers who love to make their homes both comfortable and special. And ADAMA will be right here by their side, providing their customers with low-maintenance and high-design options to simplify and beautify their lives.





Carmen_O 120x180 cm







Caracol_O Ø67,3 cm





Roma_Y 60x95 cm





Ivy_V 60x120 cm



Bringing the Christmas spirit into your home

When you think of creating a cozy home for Christmas, your thoughts might first turn to a well-decorated Christmas tree, perhaps a fir, pine, or spruce. But if you wish to “spruce” up your living room, dining room, office space, or kitchen for Christmas, why not try one of our delightful new holiday designs? By adding novel décor items to our living spaces, we also spruce ourselves up a bit, making ourselves happier and everything a little shinier.

Adding simple touches to our homes helps make them feel new again, and an easy way to do that is to bring a little bit of the season in. Here are two simple steps to a holiday home that makes you feel like celebrating.

Llevando el espíritu de Navidad a tu hogar

Cuando piensas en crear un hogar acogedor para Navidad, tus pensamientos pueden empezar con un árbol de Navidad bien decorado. Pero si deseas un abeto en tu salón, comedor, despacho o cocina para Navidad, ¿por qué no probar uno de nuestros encantadores nuevos diseños para estas fiestas? Añadiendo decoraciones originales en nuestros espacios, hace que nos cuidemos más, que nos sintamos más felices y que todo brille más.

Añadiendo simples toques a nuestro hogar, ayuda a sentirlo nuevo otra vez, y una manera fácil de hacerlo, es traer un poco de la estación en la que vivimos. Aquí te damos dos maneras simples para crear un hogar festivo.



ADAMÁ New Christmas Collection



Amar_R



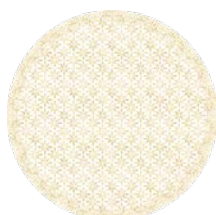
England_R



Ivy_V



Jul_C



Prague_D



Poinsetia_W



Candle_W



Festive_W



Choose your favorite placemat or table runner

Not only do placemats serve as a base layer for any Christmas table decoration, but they protect surfaces from spills, water marks, food stains, and heat damage.

When it comes to choosing Christmas placemats, choose the style, color, and shape you like. Try to pick placemat colors that complement your tablecloth and centerpiece, if you have them. To create a modern or transitional table setting, a basic color can work well, while fun holiday prints are great for households with children.

Add a festive rug underfoot

Sometimes you want to create a look that's a little more sophisticated and one that keeps on giving beyond the holiday season. Plaid, stripes, and other timeless patterns pair perfectly with the warmth of the season but look great all year, too.

A rug that features red or green can seem too bold. But it's a simple matter of choosing the right design and the right hue in the right space. Our rugs will complement your decor perfectly and add a dose of elegance without being loud or over the top.

With those two steps complete, you'll be ready to welcome your family and friends to the loveliest holiday table ever.

Elige tu individual o camino de mesa favorito

Los individuales o caminos de mesa no sólo sirven como base para cualquier decoración de mesa navideña, también protegen la superficie de derrames, marcas de agua, manchas de comida y daños por calor.

Para vestir la mesa de Navidad, solo elige el estilo, color o forma que desees. Escoge un diseño que complemente con tu mantel y pieza central, en el caso de que tengas. Para crear un estilo moderno, un color básico puede funcionar bien, mientras que los estampados divertidos son geniales para hogares con niños.

Añade una alfombra festiva

A veces queremos crear un estilo un poco más sofisticado y que, además, continúe más allá de la época navideña. Cuadros, rayas y otros patrones atemporales, encajan perfectamente con la calidez de la estación, pero también se ven perfectos durante todo el año.

Una alfombra con elementos rojos o verdes puede parecer atrevida, pero solo se trata de elegir el diseño con los tonos adecuados para cada espacio. Nuestras alfombras se complementan perfectamente con cada decoración y añaden una dosis de elegancia.

Con estos dos pasos, ya estarás preparada para dar la bienvenida a la familia y amigos a la mesa de navidad más encantadora.

 Poinsetia_W Ø 10 cm



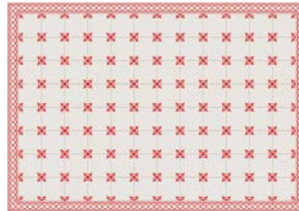
 Festive_W Ø 35 cm



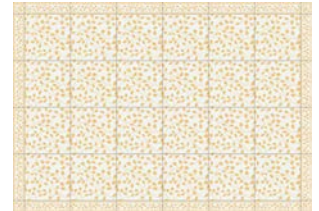
Yulia_V



Xmas_love



Belita_R



Leaves_D



Nochebuena_D



Ho_O



Hogar_W



Mistletoe_V



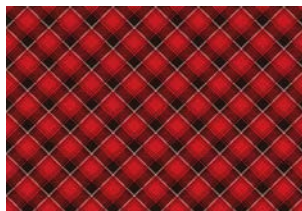
Viento_V



Holly_A



Clan_C



Clan_R



Mali_W



Casablanca_R



Cusco_B 170x240 cm



ADAMÁ New Collection



Gracia_A



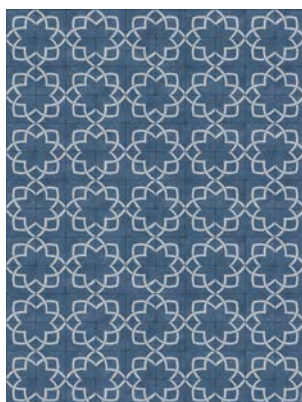
Gracia_G



Gracia_O



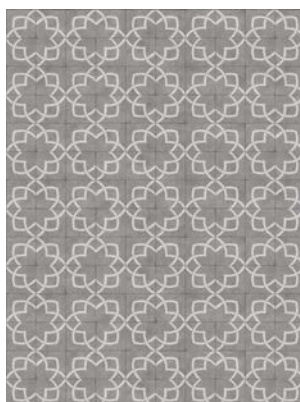
Gracia_V



Manos_A



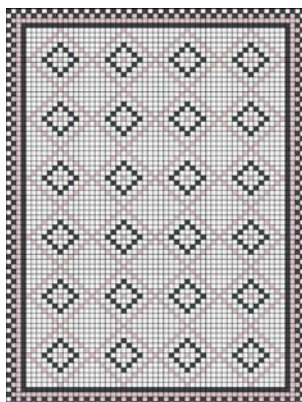
Manos_C



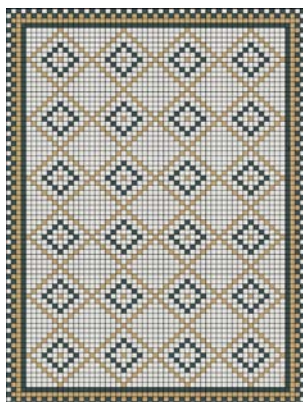
Manos_G



Piedra_G



Roma_P



Roma_Y



Vargon_B



Vargon_C



ArtDeco_V



Cusco_A



Cusco_B



Cusco_G



Pompilia_A



Pompilia_C



Pompilia_V



Limones_Y



Ethnic_A



Ethnic_C



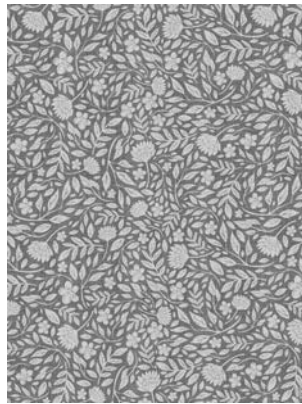
Ethnic_O



Ethnic_R



Carmen_A



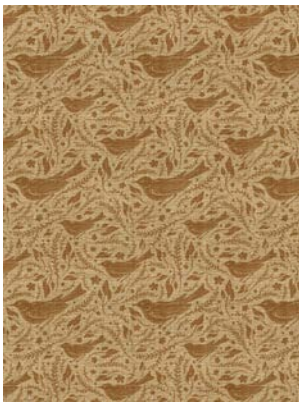
Carmen_G



Carmen_O



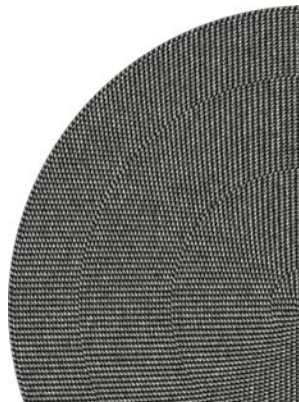
Carmen_W



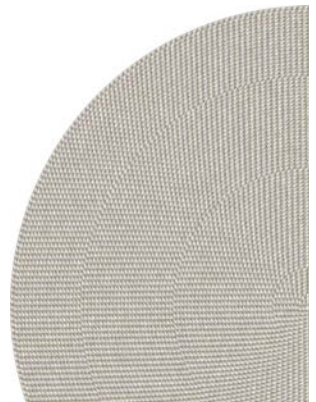
Ocell_C



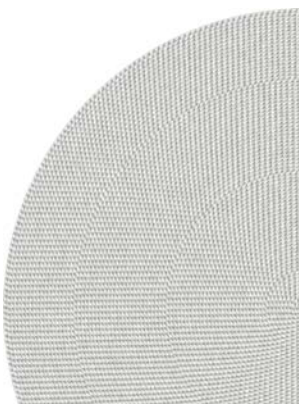
Ocell_V



Caracol_B



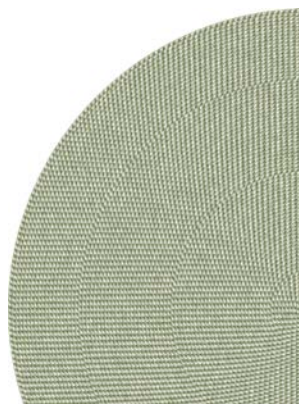
Caracol_C



Caracol_G



Caracol_O



Caracol_V



Pompilia_C 60x80 cm, 120x180 cm







Vargon_B 120x240 cm



ADAMÁ Winter 22 Collection



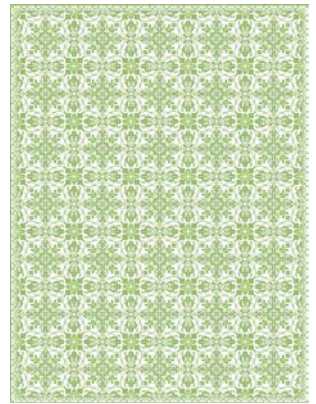
Fontana_A



Fontana_C



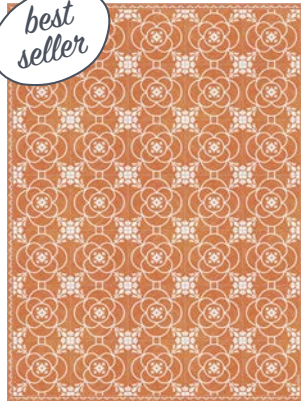
April_A



April_V



Lisa_C



Lisa_N



Lisa_O



Lisa_V



Pola_O



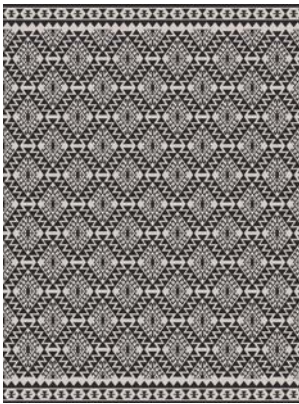
Pola_G



Polo_C



Albert_G



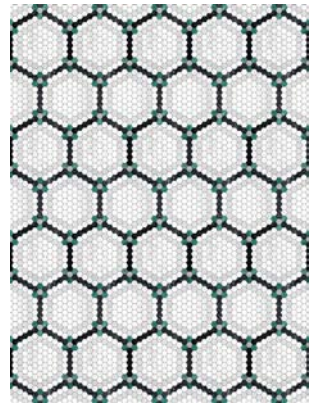
Begge_B



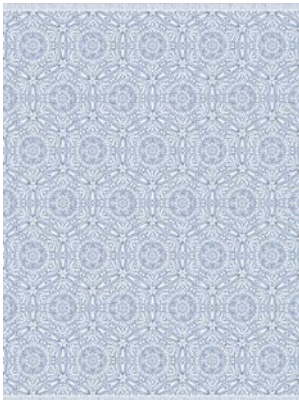
Begge_G



Begge_P



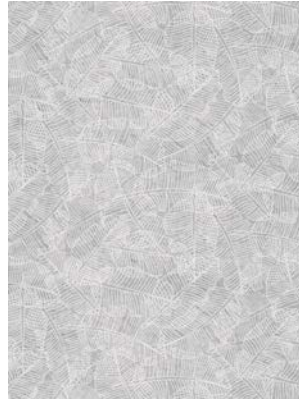
Herritage_G



Kalos_A



Kalos_O



Canarias_G



Indigo_A



Artista_A



Artista_R



Artista_V

*best
seller*



Artista_Y



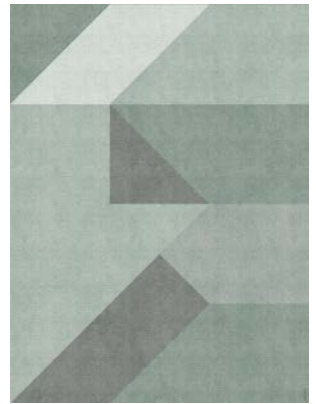
Cielo_A



Cielo_B



Campo_C



Campo_V



Dune_A



Dune_O



Dune_T



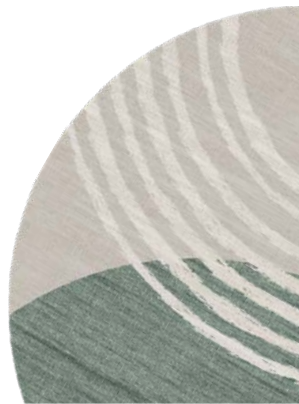
Balance_A



Balance_C



Balance_P



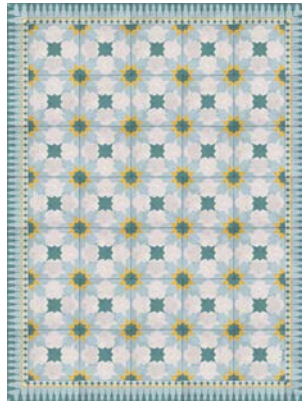
Balance_V

ADAMÁ The ones we love the most

Classic



Land_Y



Fes_A



Majestic_A



Majestic_G

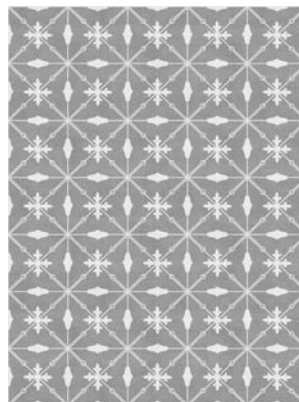
best seller



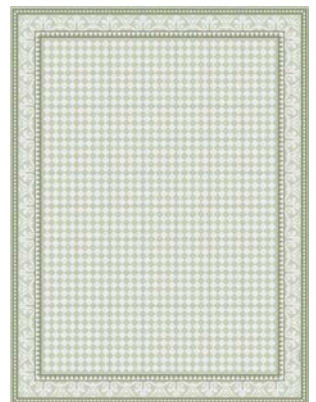
Majestic_O



Santos_C



Sue_G



Venecian_V



Grunge_A



Narangi_N



Sansa_A

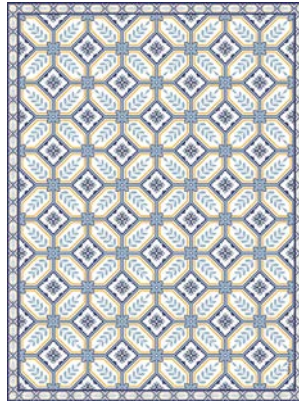
best seller



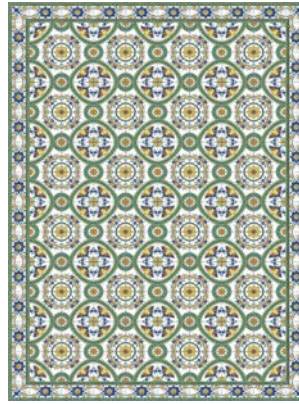
Angel_F



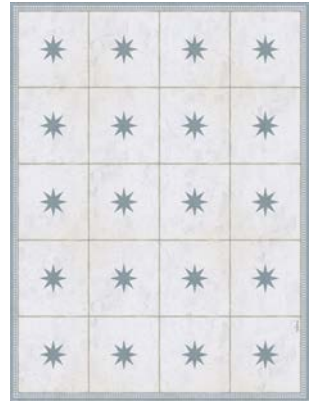
Bistro_B



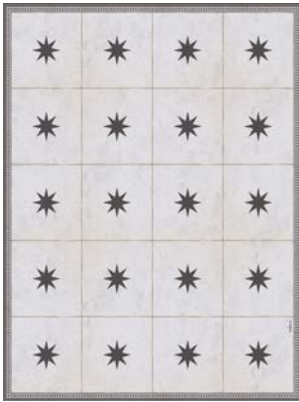
Cesar_A



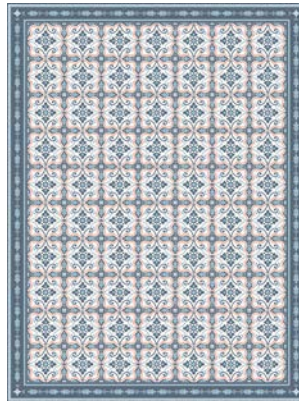
Mediterranean_V



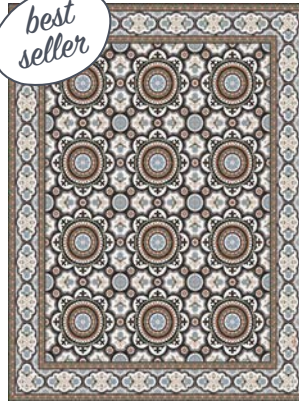
Sol_A



Sol_B



Amnita_A



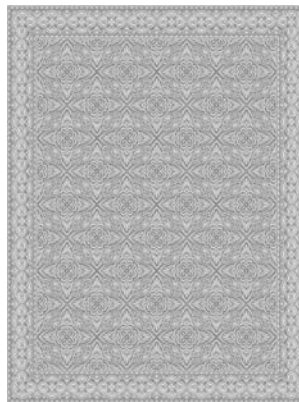
Jasmine_C



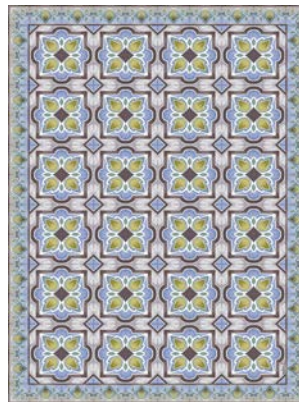
Pals_C



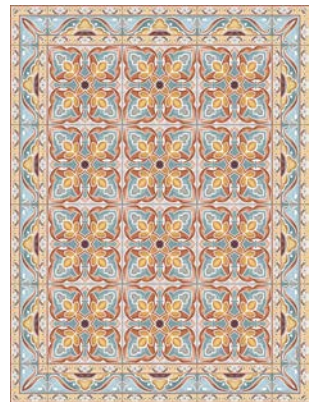
Noelia_R



Surf_G



Algae_V



Butterfly_O

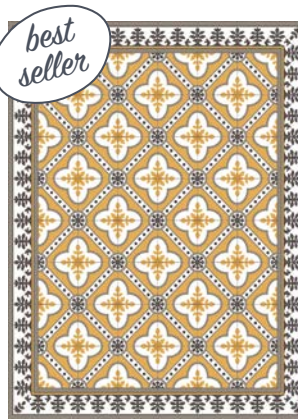
Classic



Integral_A



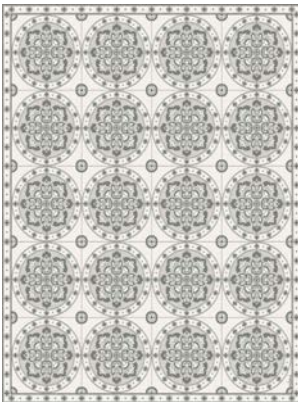
Castelo_A



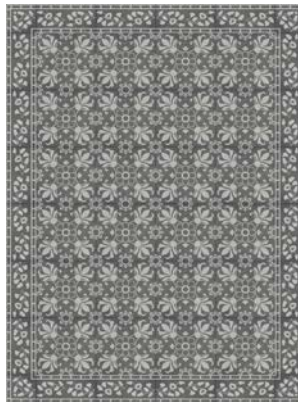
Castelo_D



Laia_A



Mundo_G



Otoño_G



Drawit_G



Flake_G



Fragments_G



Golden_D



Calidoscopi_Y



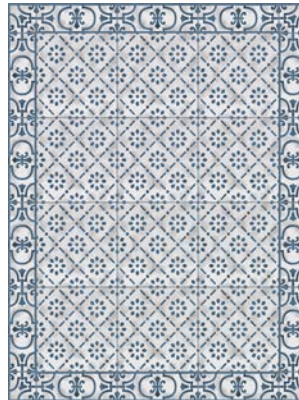
Dragon_G



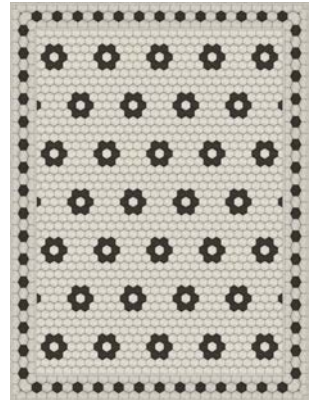
Sinspin_A



ZigZag_A



Delicado_A



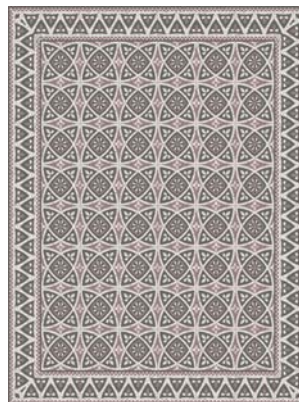
Petite_Fleur_N



Petite_Fleur_O



Petite_Fleur_K



Bar_Gris



Bar_R



Crusto_Beij



Crusto_Gris



Dream_BR



Dream_BW

Classic



Dream_GR



Flora_Blu



Palace_LG



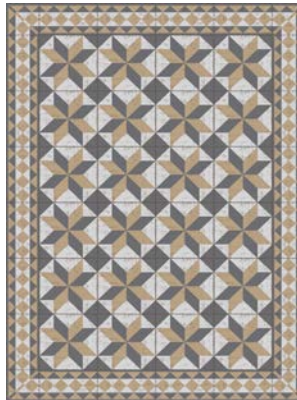
Pinta_Blu



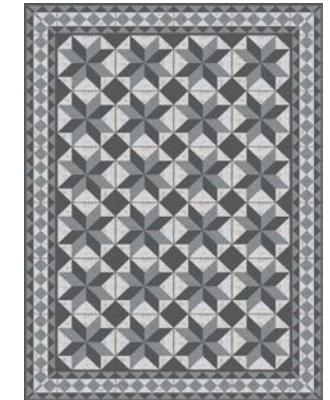
Pinta_Gris



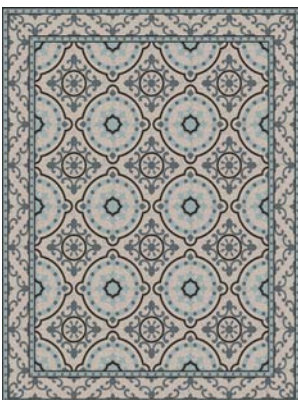
Rumi



Sun_B



Sun_Gris



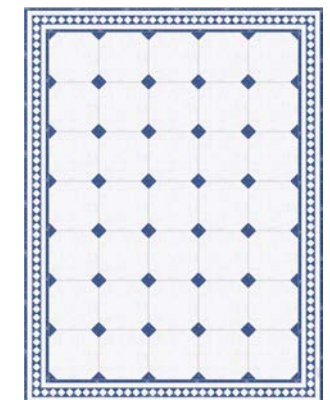
Tria_LB



Turquesa_M



Madonna_A



Lion_A

Patchwork



Patchi_BW



Vida_Mix



Porto_Mix



Vintage_CG



Arena_OG



Fresc_NA



Metal_GA



Morning_A



Sevilla_A



Maple_O

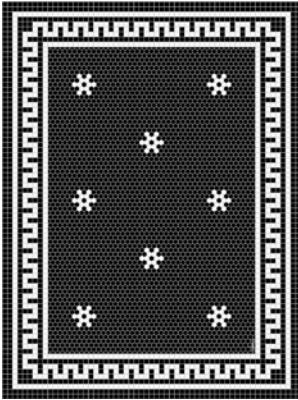


Bluesky_A

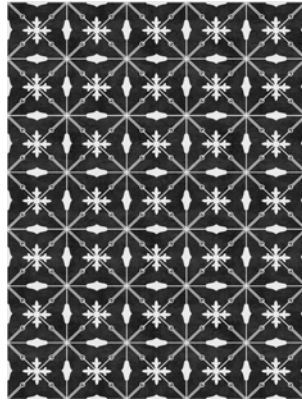


Bluesky_O

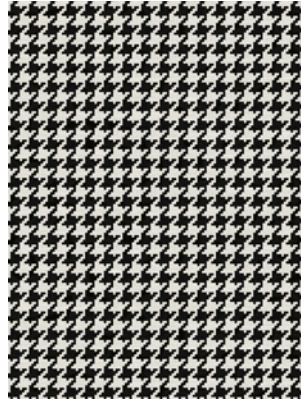
Black & White



NewYork_B



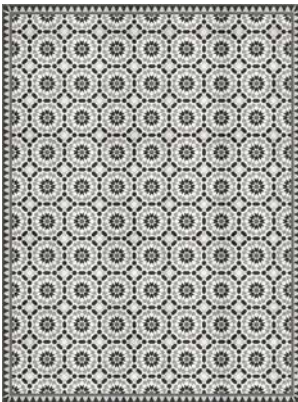
Sue_B



Falda_B



Lion_B



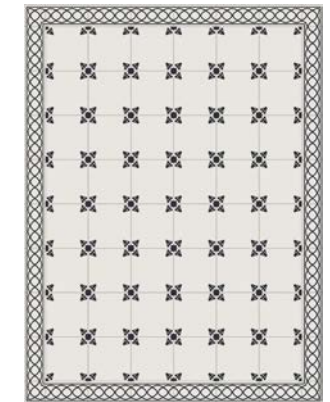
Mezquita_B



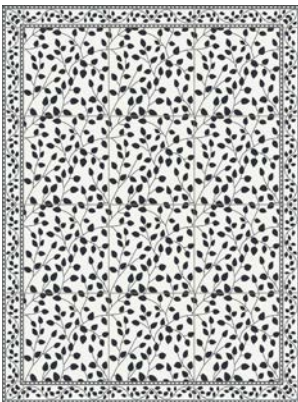
Tuxedo_B



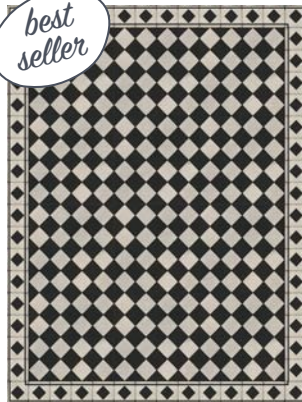
NightSky_B



Belita_B



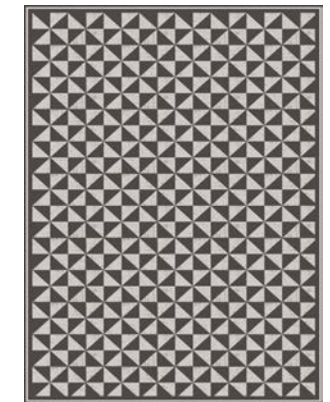
Leaves_B



Chess_B



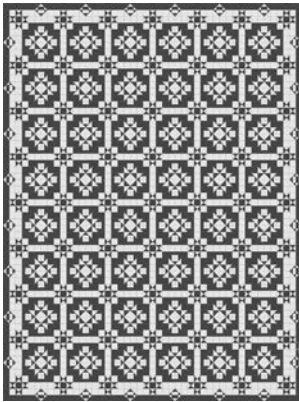
Pinta_B



Sancu

* May consist of variety of shades including off white, light gray and cream.

Geometric



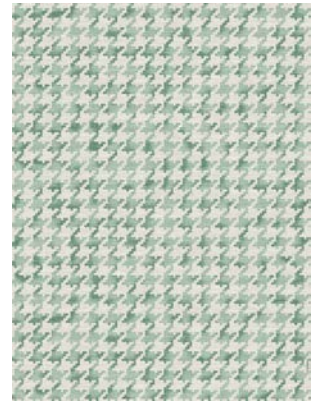
Geo_N



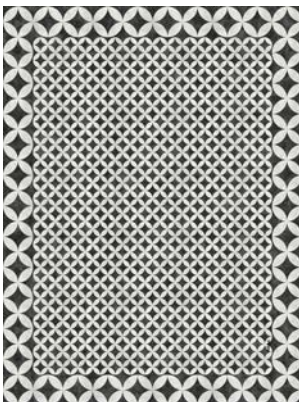
City_O



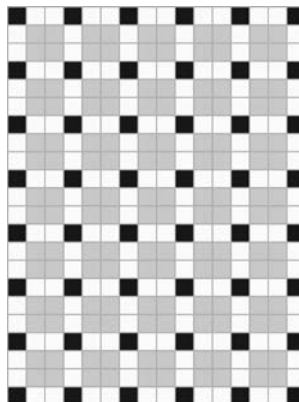
Justin_V



Falda_V



Sarona_B



Melrose_G



Cubic_G



Cubic_Mix



Kites_B



Game_A



Game_B



Game_G

Traditional



Aztec_B



Aztec_W



Castany_N



Taco_C



Adana_A



Adana_C



Mullah_T



Ojo_Mix



Hamsa_W



Granada_C



Granada_O



Pers_G

Contemporary



Kinaray_G



Armenia_G

best seller



Armenia_O



Colorado_P



Susana_G



Ella_G



Nuria_A



Nuria_C



Tal_W



Sound_V



Leather_C



Leather_G

Contemporary



Shell_O



Lace_W

best
seller



Marina_O



Lakri_O

best
seller

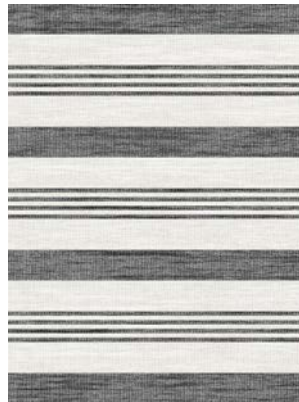


Agra_G

best
seller



Roy_C



Roy_G



Urban_A



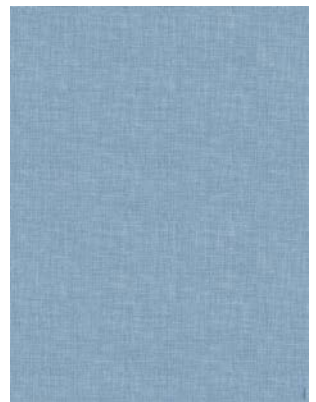
Luna_O



Luna_V



Telar_A



Telar_W



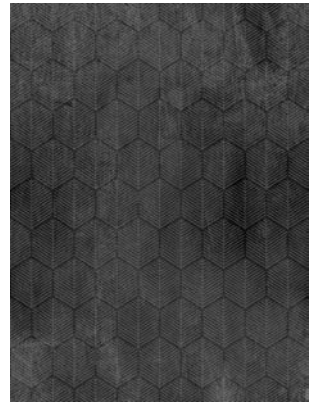
Fabric_B



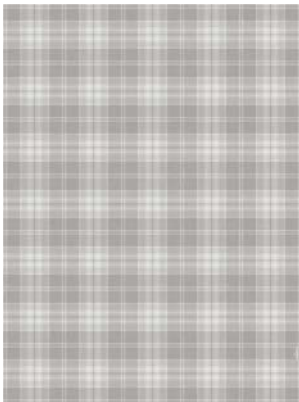
Fabric_G



Terrazito_O



Hidra_B



Clan_G



Calma_O



Freshness



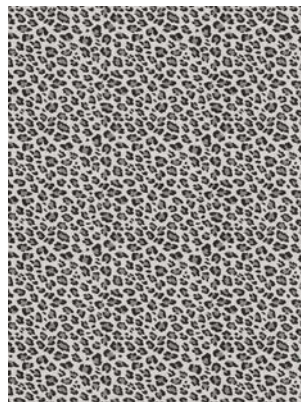
Blue vibes



Nairobi_M



Tanzania_M



Tanzania_G



Africa_M

ADAMÁ The ones we love the most

Floral



Allegra_W



Tashir_V



Lea_B



Hilos_O



Joy_W



Jacobean_A



Jacobean_P



Creeper_B



Renaissance_B



Monstera_V



Pretty blue flowers



Blooming bouquet

Coastal



Costa_A



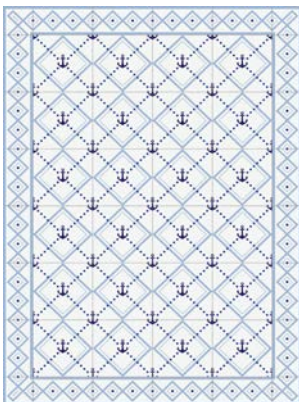
Menorca_T



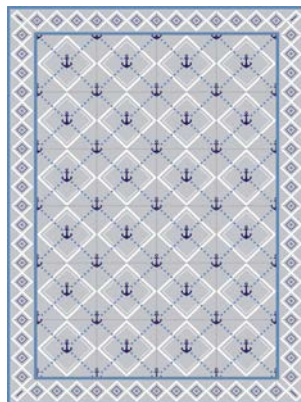
Surf_O



Noche_A

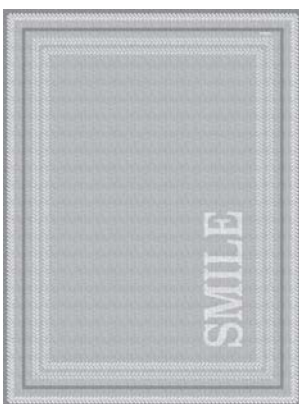


Anchor_W

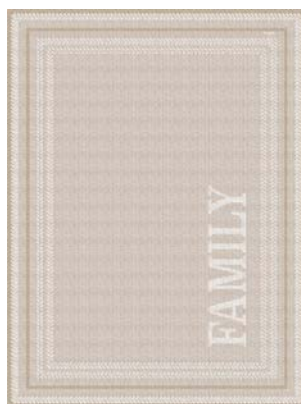


Anchor_G

Positive Vibes



Vibe_G



Vibe_O



Spirit_A



Bird_G

Circular



Mette_B



Universe_C

best
seller



Universe_A



Universe_B



Maya_G



Maya_W



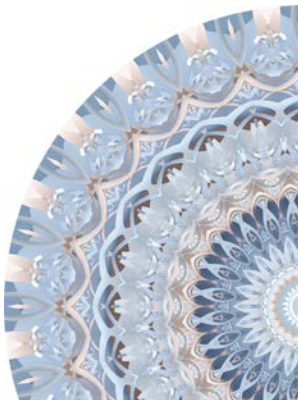
Casablanca_A



Casablanca_V



Central_C



Serenity_A



Dreamymood_C



Dreamymood_V



Harmony_O



Picas_G



Bosque_A



Bosque_V



Mali_G



Mali_O



Cosmos_B



Cosmos_W

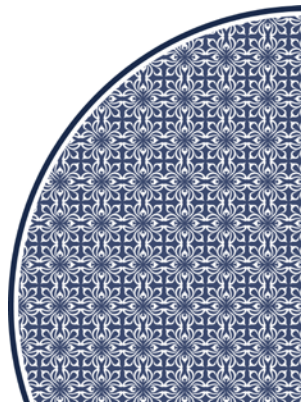
best
seller



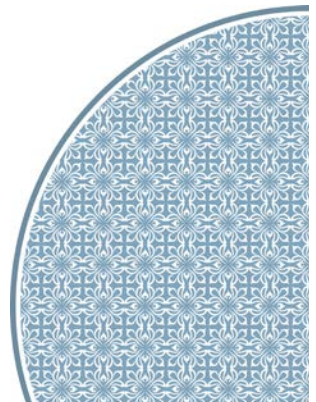
Dalia_G



Washington_A



Parc_A



Parc_W



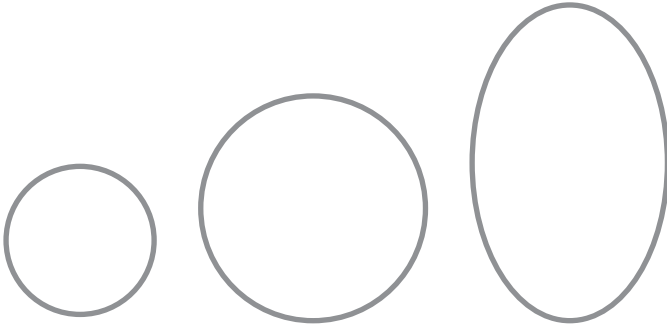
Cusco_A 120x220 cm

custom size
by ADAMÁ



Rugs

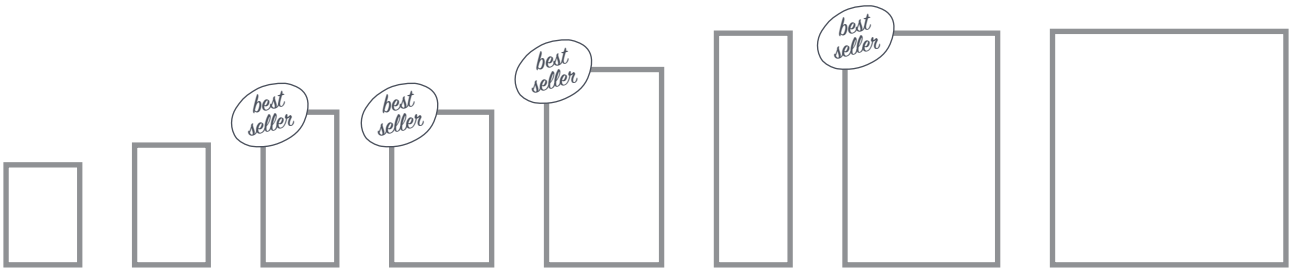
- 85% PVC / 15% Polyester
- Anti-slip
- Water resistant
- Durable
- Antiallergic
- Easy to clean



Ø 47.24"
Ø 3.93'
Ø 120 cm

Ø 70.86"
Ø 5.90'
Ø 180 cm

60"x96"
5'x8'
152,4x243,8 cm



23.62"x31.49"
1.96'x2.62'
60x80 cm

23.62"x37.40"
1.96'x3.12'
60x95 cm

23.62"x47.24"
1.96'x3.93'
60x120 cm

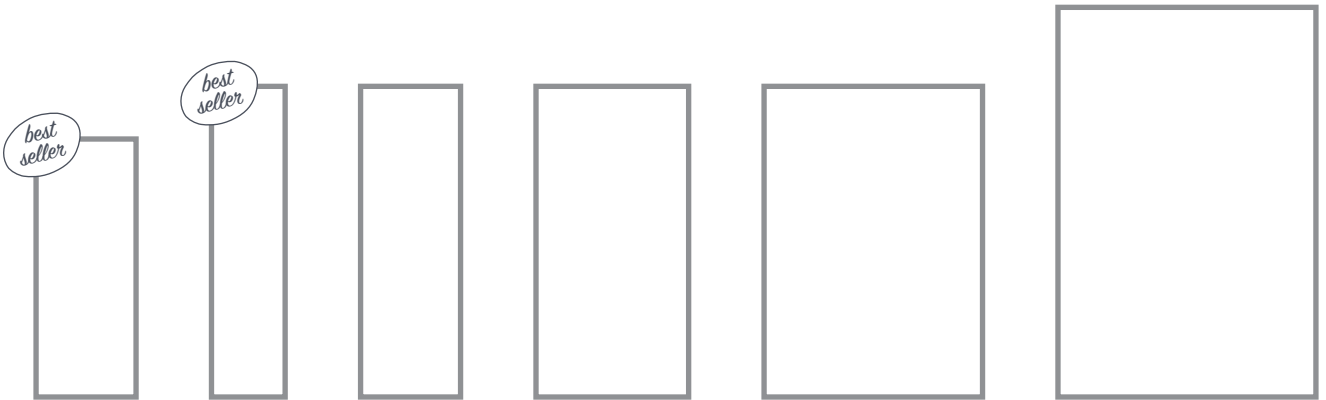
31.49"x47.24"
2.62'x3.93'
80x120 cm

36"x60"
3'x5'
91,4x152,4 cm

23.62"x70.87"
1.96'x5.9'
60x180 cm

47.24"x70.86"
3.93'x5.9'
120x180 cm

72"x72"
6'x6'
182,9x182,9 cm



31.49"x78.74"
2.62'x6.56'
80x200 cm

23.62"x94.48"
1.96'x7.87'
60x240 cm

31.49"x94.48"
2.62'x7.87'
80x240 cm

47.24"x94.48"
3.93'x7.87'
120x240 cm

66.92"x94.48"
5.57'x7.87'
170x240 cm

78.74"x118.11"
6.56'x9.84'
200x300 cm

Coasters

- 85% PVC / 15% Polyester
- Water resistant
- Durable
- Antiallergic
- Easy to clean



3.93"x3.93"	5.90"x5.90"	7.87"x7.87"	Ø 3.93"	Ø 5.90"	Ø 7.87"
0.32'x0.32'	0.49'x0.49'	0.65'x0.65'	Ø 0.32'	Ø 0.49'	Ø 0.65'
10x10 cm	15x15 cm	20x20 cm	Ø 10 cm	Ø 15 cm	Ø 20 cm



Placemats / Table runners

- 87% PVC / 13% Polyester ; 85% PVC / 15% Polyester
- Water resistant
- Soft and flexible ; Semi-rigid
- Antiallergic
- Easy to clean



Ø 13.77"x13.77"	Ø 13.77"	Ø 14"x19.25"
Ø 1.14'x1.14'	Ø 1.14'	Ø 1.17'x1.6'
Ø 35x35 cm	Ø 35 cm	Ø 35,5x49 cm

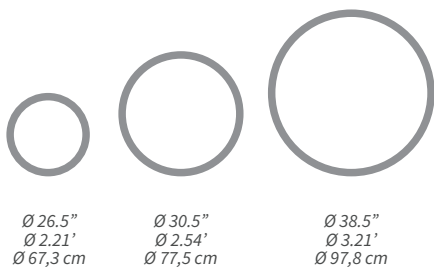


11.81"x15.75"	12"x18"	13.77"x19.68"	15.74"x31.49"	15.74"x47.24"	15.74"x70.86"
0.98'x1.31'	1'x1.5'	1.14'x1.64'	1.31'x2.62'	1.31'x3.93'	1.31'x5.90'
30x40 cm	30,5x45,7 cm	35x50 cm	40x80 cm	40x120 cm	40x180 cm



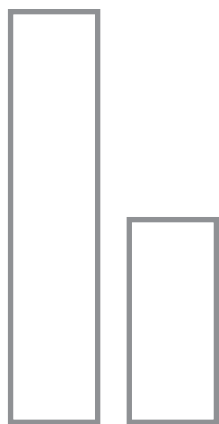
Table Toppers

- 87% PVC / 13% Polyester ; 85% PVC / 15% Polyester
- Water resistant
- Soft and flexible ; Semi-rigid
- Antiallergic
- Easy to clean



Wall-A (adhesive wall strips)

- 60% PVC, 40% Cotton / 100% Polyester
- Water resistant
- Durable
- Easy to clean
- Removable



ALWAYS BETTER WITH
MELROSE

ATLANTA

AMERICASMART ATLANTA
BLDG 1, 17-C11 & 17-E18

DALLAS

DALLAS MARKET CENTER
WORLD TRADE CENTER 310

LAS VEGAS

WORLD MARKET CENTER
C-606 & C-618

adama.melroseintl.com | 800.282.2144

